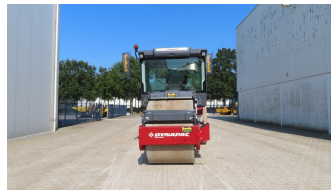




## Dynapac CS1400 VI



### Machine

**Brand:** Dynapac

**Model:** CS1400 VI

**Construction year:** 2024

**Operating Hours:** 82

**Emission Class:** Stage V / Tier 4F

**EPA:** 

**CE:** 

**Stock Number:** DRW0024

### Options

**Climate Control:** Airco

### Dimensions

**Height:** 300 cm

**Width:** 210 cm

**Length:** 485 cm

**Total Weight:** 10350